

Scaling the science-based circular innovation

Delegation of companies from Skåne



ORGANISED BY

business
Blekinge

BUSINESS
REGION
KRONBERG

 Invest In Halland

invest in skåne

CO-FINANCED BY





What Skåne's offers impact investors & circular companies:

Research excellence

Skåne is host to Sweden's state-of-the-art material science research facilities – MAX IV and ESS, and is one of the most research-intensive regions in Europe, spending over 3% of its GDP on R&D activities. Skåne continuously spins out innovations and practical applications in processing technology, microbiology, green chemistry, nanotech, and other fields enabling circularity at scale.

Open business climate

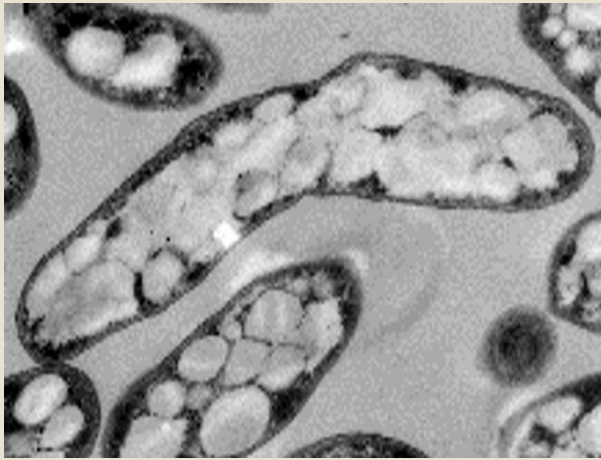
Fostering a culture of open collaboration and cross-industry dialogue across the material value chain, Skåne is home to over 10 industrial clusters, which actively focus on increasing resource efficiency and circularity.

Optimal location

Skåne is a strategic entry point from continental Europe to the Nordics, with one-third of all Swedish trade passing through its four major TEN-T ports. The region produces around 30% of Sweden's food and has deep expertise in handling materials, goods, and biomass. Its insights into waste streams across local and global value chains enable the development of new waste-based business models in sectors like food and beverage, bio-based solutions, green chemistry, textiles, and recycling technology.

Replacing fossil-based solutions with green efficiency:

Bioextrax transform waste-to-value in bioplastics and protein hydrolysis



PHA's in the making – bacterial process

Image: Bioextrax

Core industry: green chemicals, biodegradable and biobased polymers

Headquarters: Lund, Skåne

Looking to connect with:

- ✓ R&D partners
- ✓ Manufacturing partners
- ✓ Service providers

Bioextrax develops cost-effective, sustainable solutions for producing Polyhydroxyalkanoates (PHAs). Converting industrial waste into high-value bioplastics and proteins. Their innovative PHA production process reduces plastic pollution and promotes circular economy, lowering the costs and enhancing sustainability.

Capital Stage: Series A/B **TRL:** 7

Contact person: Edvard Hall, CEO, edh@bioextrax.com,
<https://www.linkedin.com/in/edvard-hall-44334263/>

Web: www.bioextrax.com

Turning trash into treasure:

Recoma's success story in recycling for construction



Recoma design board with visible raw material

Image: Recoma

Core industry: construction materials, recycling

Headquarters: Hässleholm, Skåne

Looking to connect with:

- ✓ Investors
- ✓ B2B partners

Recoma transforms hard-to-process composite waste that would otherwise be incinerated, combining paper and plastic, into durable building boards that rival traditional materials. The company recycles 4,000,000 kg of composite packaging per year, saving 2,700 tons of CO2 emissions per year.

Capital Stage: Growth **TRL:** 9

Contact: Max Rosenberg, founder and CEO, max.rosenberg@recoma.se

Web: <https://www.recoma.com/>

Securing the world's protein feed supply:

Dapibuset - unlocking farming potential with on-site feed production



Associative illustration, on-farm feed production

Image: Dapibuset

Core industry: food and agritech

Headquarters: Lund, Skåne

Looking to connect with:

- ✓ Investors
- ✓ B2B partners
- ✓ R&D partners

Dapibuset is transforming animal feed with local, soy-free protein solutions. By using biotech to convert crops into high-quality protein, they enable sustainable, cost-stable concentrate feed production directly on farms. This reduces dependency on soy, lowers emissions, and builds resilient food systems. Their approach offers farmers greater control over feed supply without compromising nutrition.

Capital Stage: Early **TRL:** 7

Contact person: Cofounders Lidia Garcia Pou & Micael Simonsson,
Lidia.garcia@dapibuset.com, Micael.simonsson@dapibuset.com

Web: www.dapibuset.com

Changing perspectives from waste to everyday luxury:

Go Cirkulär - Sweden's first upcycled skincare company



Go Cirkulär coffee body scrub

Image: Go Cirkulär

Core industry: skincare and cosmetics, consumer brands

Headquarters: Malmö, Skåne

Looking to connect with:

- ✓ Investors
- ✓ R&D partners
- ✓ Manufacturing partners
- ✓ Distributors

Go Cirkulär specialises in transforming local ingredients like coffee grounds, oats, and oils from Skåne into high-performance skincare products. Inspired by nature and the need to minimise the environmental impact of cosmetics, Go Cirkulär addresses consumer demand for harm-free skincare while promoting mindful consumption and lifestyle choices.

Capital Stage: Pre-seed **TRL:** 9

Contact person: Irene Atance, CEO/Founder, irene@gocirkular.se

Web: <https://www.gocirkular.com/>

Services for circularity-minded makers & engineers:

Hjort creations enabling large-scale 3D production & recycling



3D-printed model for architecture firm

Image:Hjort Creations

Core industry: additive manufacturing

Headquarters:
Helsingborg, Skåne

Looking to connect with:

- ✓ Manufacturing partners
- ✓ R&D partners
- ✓ Distributors

Hjort Creations AB offers large-scale 3D printing services, producing parts up to several cubic metres in size with sustainable, on-demand alternatives. Their Design for Additive Manufacturing (DfAM) maximises material efficiency and recyclability, simplify supply chains, and empowers manufacturers to be more agile and resource-efficient.

Capital Stage: Growth **TRL:** 9

Contact person: Per Hjort, CEO, per@hjortcreations.se
<https://www.linkedin.com/in/per-hjort-564733209/>

Web: <https://www.hjortcreations.com/>

Temporary, yet still circular:

Design LincA innovates localised fair booth production with 3D printing



3D-printed design objects, large scale?

Image: Design LincA

Core industry: interior design, events

Headquarters: Kristianstad, Skåne

Looking to connect with:

- ✓ R&D partners
- ✓ Manufacturing partners
- ✓ Distributors

Design LincA specialises in localising fair booth production using 3D printing and minimising transportation with flat packages of wood and cardboard. Inspired by the desire to provide engaging experiences while thinking globally, they address the need for efficient booth production. Their unique approach leverages 3D printing for larger parts, which is currently underutilised in the industry, setting them apart in the market.

Capital Stage: Pre-seed

TRL: 8

Contact person: Camilla Lindberg, CEO, camilla@designlinca.com

<https://www.linkedin.com/in/camilla-lindberg-773891255/>

Fermentation as a service:

Indienz transform industrial waste into high-value biomolecules



Part of the fermentation facility in Billeberga

Image: Indienz

Core industry: green chemistry, biosurfactants

Headquarters: Billeberga, Skåne

Looking to connect with:

- ✓ B2B partners
- ✓ R&D partners
- ✓ Customers for contract fermentation

Indienz offers customised fermentation services (up to 20m³) and produce cost-efficient, sustainable biosurfactants (Biomicelle) for green formulations in personal care, home cleaning, and agro-biotech. Their efficient, scalable microbial processes reduce costs and reliance on petrochemicals, protecting our water, soil, and health for future generations.

TRL: 6-7

Contact person: Gashaw Mamo, CTO, gashaw@indienz.com,
<https://www.linkedin.com/in/gashaw-mamo-a7888726b/>

Web: <https://indienz.com/>

Keeping the textile fibres in the loop:

ShareTex – revolutionising the fashion industry one fibre at a time



Recycled cellulose textile fibres from Sharetex

Image: ShareTex

Core industry: textiles,
chemical recycling

Headquarters: Lund, Skåne

Looking to connect with:

- ✓ R&D partners
- ✓ B2B and manufacturing partners

ShareTex converts waste textiles into high-quality recycled products for the textile and chemical industries. Their efficient process leverages existing equipment, ensuring superior technical performance. ShareTex's recycled cellulose pulp matches virgin wood pulp quality, and their recycled sugar boasts higher purity than alternatives.

Capital Stage: Seed **TRL:** 4-5

Contact person: Miguel Sanchis Sebastián, CEO,
miguel.sanchis@sharetex.com

Web: <https://www.sharetex.com/>

The flavours of a healthier food systems:

Kado gives a spotlight to rejected functional food ingredients



A can of Kado beverage with avocado seed extract

Image: Kado, Simply No Waste

Core industry: foods and beverages

Headquarters: Malmö, Skåne

Looking to connect with:

- ✓ Investors
- ✓ B2B partners
- ✓ R&D partners

Kado is a novel drink by Simply No Waste, a foodtech company combating food waste by upcycling by-products into nutritious beverages. Using typically discarded avocado seeds, Kado combines seed extract with oolong and sencha tea, and strawberries, offering a delicious, low-sugar beverage that supports health and sustainability. From seed to sip, Kado nurtures the body and elevates the spirit.

TRL: 9

Contact person: Arash J. Sabet, Founder and CEO, arash@simplynowaste.se, www.linkedin.com/in/arash-m-sabet

Circular South Sweden collaboration partners:

Business Blekinge

[Business Blekinge](#) is the official regional hub for foreign direct investment and trade enquiries in Blekinge. It is a collaboration between academy, regional clusters, science parks, municipalities and regional public authorities.

Business Region Kronoberg

[Business Region Kronoberg](#) is a collaboration between Region Kronoberg and the county's eight municipalities and is coordinated by Region Kronoberg via a joint declaration of intent from 2019. What benefits one organisation today, spills over to others tomorrow. Regardless if you want to establish, develop or start a new business, here you will find yourself in good company and part of a creative atmosphere.

Invest in Halland

[Invest in Halland](#) is a non-profit, regional investment promotion agency located on the west coast of Sweden. Our purpose is to attract international investments to our region and to develop Halland as a business destination.

At Invest in Halland we help international companies invest and expand in our region by offering free and confidential guidance throughout the entire establishment process.

Invest in Skåne

[Invest in Skåne](#) is the official investment promotion agency in Sweden's southernmost region – Skåne. We provide professional advice and services to international companies considering Skåne for future investments and expansions. Invest in Skåne is part of the department for Regional Development at Region Skåne.

Exportcenter Skåne

[Exportcenter Skåne](#) is a collaborative initiative between Region Skåne and the Swedish Agency for Economic and Regional Growth, aimed at simplifying international growth for businesses. By providing targeted support and guidance, it helps companies in Skåne expand globally, fostering long-term competitiveness and development in the business sector.

 Sweden Sverige						
ORGANISED BY				CO-FINANCED BY		
						